



CHECK LIST OF FLOWERING PLANTS OF NAHARGARH WILDLIFE SANCTUARY JAIPUR, RAJASTHAN, INDIA

NAVEEN KUMAR^{1*}, YOGITA SOLANKI², ARCHANA MEENA¹, AMIT KOTIYA¹

¹Department of Botany, University of Rajasthan, Jaipur, India, 302004

²Department of Botany, Kanoria PG Mahila Mahavidyalaya, Jaipur, Rajasthan, India

*Corresponding Author's Email: navkn99@gmail.com

The present study was conducted to collect, identify and document the flora of Nahargarh Wildlife Sanctuary, Jaipur district of Rajasthan, India. The Survey of plants of Sanctuary was carried out during 2022 to 2024. The different species collected during the surveys were identified with the help of various flora of Rajasthan taxonomic literature, taxonomy expert and Department of Botany, University of Rajasthan, Jaipur. A total of 506 plants species belonging to 90 families have been found in the investigation. Poaceae was the dominant family, followed by Fabaceae and Asteraceae.

Keywords: Biodiversity, Conservation, Distribution, Flora, Dicot, Poaceae, Species.

Introduction

Biodiversity refers to the variety of life forms in various ecosystems, encompassing the different species of plants, animals, and microorganisms, the genetic differences within these species, and the ecosystems they form. Biodiversity has attracted world attention because of the growing awareness of its importance on the one hand and the anticipated massive depletion on the other¹. Biological diversity must be regarded as a vital global resource that should be cataloged, utilized responsibly, and most importantly, preserved². Beyond its significant economic, ethical, and aesthetic benefits, biodiversity is essential for sustaining ecosystem function and stability^{3,4,5}. So, conservation of ecosystem and maintenance of biodiversity is matter of both national and international concern. Proper management of biodiversity worldwide ensures the wellbeing of populations. Ecosystems provide numerous services, including provisioning, regulating, and socio-cultural benefits⁶.

Floristic studies are essential for assessing Phytodiversity, which refers to the variety of plant life in a region. These

studies play a critical role in conservation management and the sustainable use of biological resources. They offer valuable insights into changing floristic patterns, the emergence of new invasive species, the current status of plant species, and the identification of rare, endemic, and threatened (RET) taxa in specific phytogeographical areas⁷.

The plant checklist provides a baseline that is crucial reference material for future ecological studies and a guide to rehabilitation of degraded sites within the forest. It will arouse interest to managers, researchers and partners of the need to conserve the forest. Further, the species checklist will enhance management and conservation of the forest especially for the threatened plants species of socio-economic and ecological importance.

Material and Methods

Study Area:

Rajasthan state covers 342,239 km² area of country. It has 25 wildlife sanctuaries which cover 5379.26 km² area of the state. The entire geographical area of the Jaipur district is 11,143 km², with the total forest area of Jaipur is 554.86 km² which is

4.98% of the total area of the district⁸. Nahargarh wildlife sanctuary lies in the Jaipur district. It is in the outskirts of Jaipur city near Jaipur Delhi highway. The Nahargarh Wildlife Sanctuary is located in

the Aravalli ranges at Amber hills of Jaipur. The region covers 50 km² and is located between 26°56'15.08" to 26°57'5.81" N and 75°48'55.70" to 75°46'54.65" E (Figure 1).

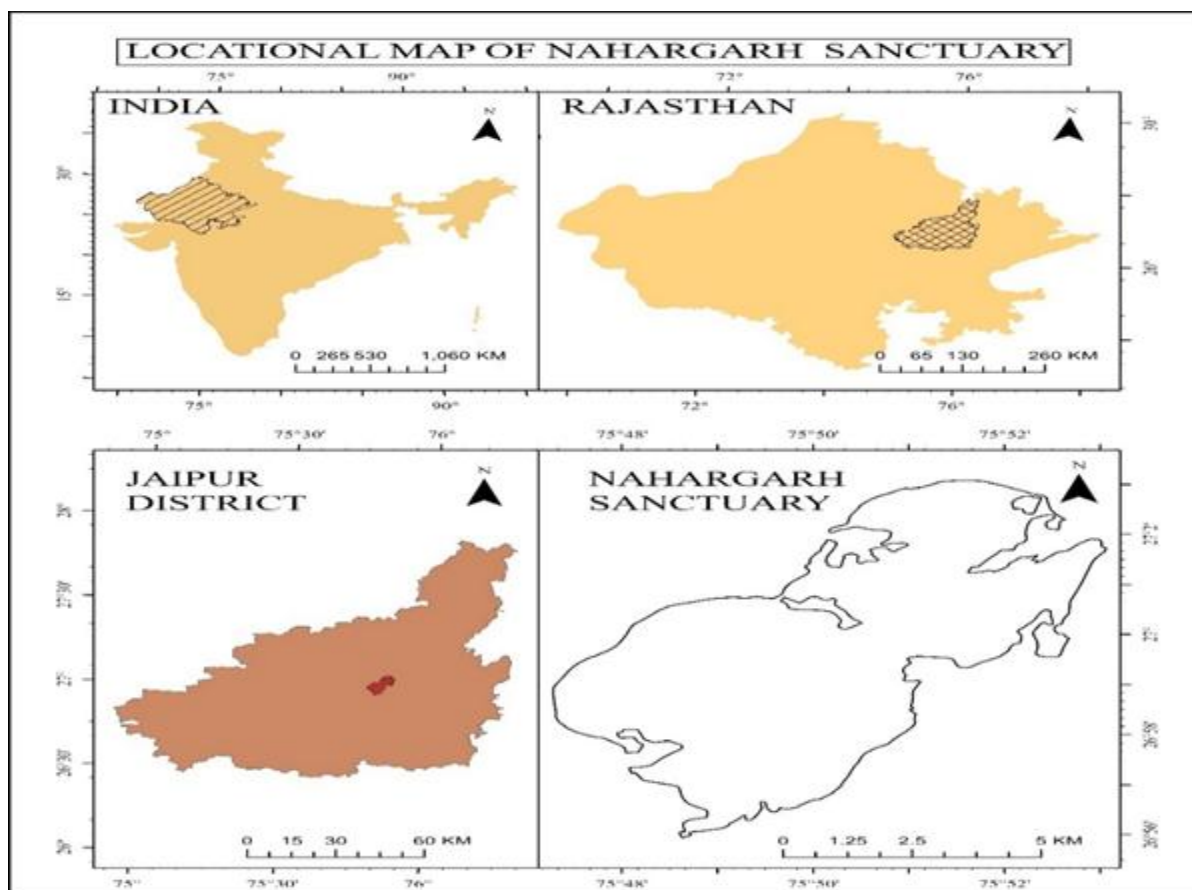


Figure 1. Key map of the study area in Jaipur, Rajasthan.

The Sanctuary was notified vide Government of Rajasthan notification no. F11(39) Revenue/8/80 of dated 22 September 1980. Nahargarh Wildlife Sanctuary was named after the Nahargarh fort. The climate of the area is semi-arid characterized by distinct winter, summer and monsoon season. The forest found in this protected area is classified into Tropical Dry Deciduous and Tropical Thorne Forest as per classification of Champion and Seth⁹.

The extremely dry climate of Nahargarh is somewhat unfavorable to the luxuriant growth of plants because of scarcity of the water, however it supports very unique flora. Because of dominance of species of *Acacia* Mill. and scrubby nature of forest, it was neglected by explorers and hence remain unexplored for many years. That is why comprehensive and reliable floristic survey of Nahargarh is not available.

Table 1. Flowering plants of Nahargarh Wildlife Sanctuary.

Group	Families	Genera	Species
Dicots	78	272	403
Monocots	12	64	103
Total	90	336	506

Urbanized area in Jaipur region continue to expand and threatened protected areas. It is necessary to conserve and protect vegetation of these areas. Urban development produces some of the greatest local extinction rates and frequently eliminates the large majority of wild vegetation. Urbanization leads to habitat fragmentation, where larger continuous habitats are divided into smaller unconnected patches. The objective of this study is identification and documentation of flora (flowering plant species) of the Sanctuary.

Field survey:

Frequent Survey and exploration were undertaken covering the growth during rainy, winter & summer season in 2022 to 2024. Preliminary survey was undertaken throughout the sanctuary to identify the areas rich in diversity. The plant samples were collected on morphological and reproductive characters bases. These specimens were identified and confirmed with help of regional floras of Rajasthan ("Flora of North-East Rajasthan" by Sharma and Tiagi¹⁰, "Flora of Rajasthan" by Shetty and Singh^{11,12,13}, "Flora of Rajasthan (South and South-East Rajasthan)" by Tiagi and Arey¹⁴, "Flora of South-Central Rajasthan" by Yadav and Meena¹⁵, and "Flora of Rajasthan" by Kotiya¹⁶ and related literature.

Results and Discussion

The present checklist is an attempt to list down all the angiospermic plant species currently found in the Nahargarh Wildlife Sanctuary, thereby enhancing our understanding of this unique ecosystem. This study identified a total of 506 species belonging to 336 genera and 90 families, classified according to the Bentham and Hooker system (Table 2.). Among these, dicots are represented by 403 species belonging to 272 genera and 78 families while Monocots are represented by 103 species belonging to 64 genera and 12

families (Table 1.). An analysis of the life-form composition reveals that herbaceous plants are the most prevalent, with 294 species, followed by 92 tree species, 71 shrub species, and 49 climbing species (Figure 7). This indicates a significant dominance of herbaceous plants within the sanctuary. *Anogeissus pendula*, *Acacia senegal*, *Boswellia serrata*, *Lannea coromandelica*, *Butea monosperma*, *Holoptelea integrifolia* etc., are some of the dominant tree species in the sanctuary. The families with high species diversity are Poaceae (65 species), Fabaceae (62), Asteraceae (34), Convolvulaceae (19), Acanthaceae (17), Euphorbiaceae (16), Cyperaceae (16), Malvaceae (14), Cucurbitaceae (13), Amaranthaceae (13) (Figure 8). The Nahargarh Wildlife Sanctuary features a tropical dry deciduous forest ecosystem, which supports a rich diversity of flora.

Conclusion

The comprehensive inventory of angiosperms provides a crucial baseline for future ecological monitoring and assessments, allowing researchers and conservationists to track changes in plant diversity over time. The sanctuary's plant composition faces significant threats from climate change, habitat loss, grazing, invasive species introduction, and anthropogenic disturbances, which may alter the current biodiversity in the near future. Increasing population of invasive species such as *Parthenium hysterophorus* L., *Lantana camara* L., and *Prosopis juliflora* DC. are significantly altering native vegetation by disrupting their natural habitat. In this study, the angiosperms of the sanctuary are classified according to the Bentham and Hooker system, identifying a total of 506 species distributed across 336 genera and 90 families. Among dicots, Fabaceae was found to be the largest family, while Poaceae was the largest family among monocotyledons. While doing field study in the sanctuary, we observed the



Figure 2. (A) *Wrightia tinctoria* (Roxb.) R. Br., (B) *Sterculia urens* Roxb., (C) *Acacia leucophloea* (Roxb.) Willd., (D) *Crateva adansonii* DC., (E) *Boswellia serrata* Roxb. ex Coleb., (F) *Butea monosperma* (Lam.) Taub., (G) *Anogeissus pendula* Edgew., (H) *Tamarindus indica* L., (I) *Ehretia laevis* Roxb.



Figure 3. (A) *Naringi crenulata* (Roxb.) Nicolson, (B) *Bauhinia racemosa* Lam., (C) *Capparis decidua* (Forssk.) Edgew., (D) *Lannea coromandelica* (Houtt.) Merr., (E) *Martynia annua* L., (F) *Acacia jacquemontii* Benth., (G) *Rhus mysurensis* G. Don, (H) *Ludwigia prostrata* Roxb., (I) *Maytenus emarginatus* (Willd.) Ding Hou.



Figure 4. (A) *Phyla nodiflora* (L.) Greene, (B) *Polygala erioptera* DC., (C) *Ipomoea coptica* (L.) Roth, (D) *Maerua oblongifolia* (Forssk) A. Rich., (E) *Hyptis suaveolens* (L.) Poit., (F) *Diplocyclos palmatus* (L) Jeffrey, (G) *Monsonia senegalensis* Guill. & Perr., (H) *Farsetia hamiltonii* Royle, (I) *Centipeda minima* (L.) A. Braun & Asch.



Figure 5. (A) *Dyerophytum indicum* (Gibs. ex Wt.) O. Ktze., (B) *Oligochaeta ramosa* (Roxb.) Wagen., (C) *Ceropogia bulbosa* Roxb., (D) *Abrus precatorius* L., (E) *Arnebia hispidissima* (Lehm.) DC., (F) *Anisochilus carnosus* (L. f.) Wall., (G) *Lepidagathis trinervis* Wall. ex Nees, (H) *Striga gesnerioides* (Willd.) Vatke, (I) *Blepharis indica* Stocks ex T. Anderson,



Figure 6. (A) *Gloriosa superba* L., (B) *Murdannia nudiflora* (L.) Brenan, (C) *Typha angustata* Bory & Chaub., (D) *Heteropogon contortus* (L.) P. Beauv. ex Roem. & Schult., (E) *Eragrostiella bifaria* (Vahl.) Bor., (F) *Cyperus rotundus* L., (G) *Tetrapogon tenellus* (Koen. ex Roxb.) Chiov., (H) *Cyperus niveus* Retz., (I) *Tragus roxburghii* Panigrahi.

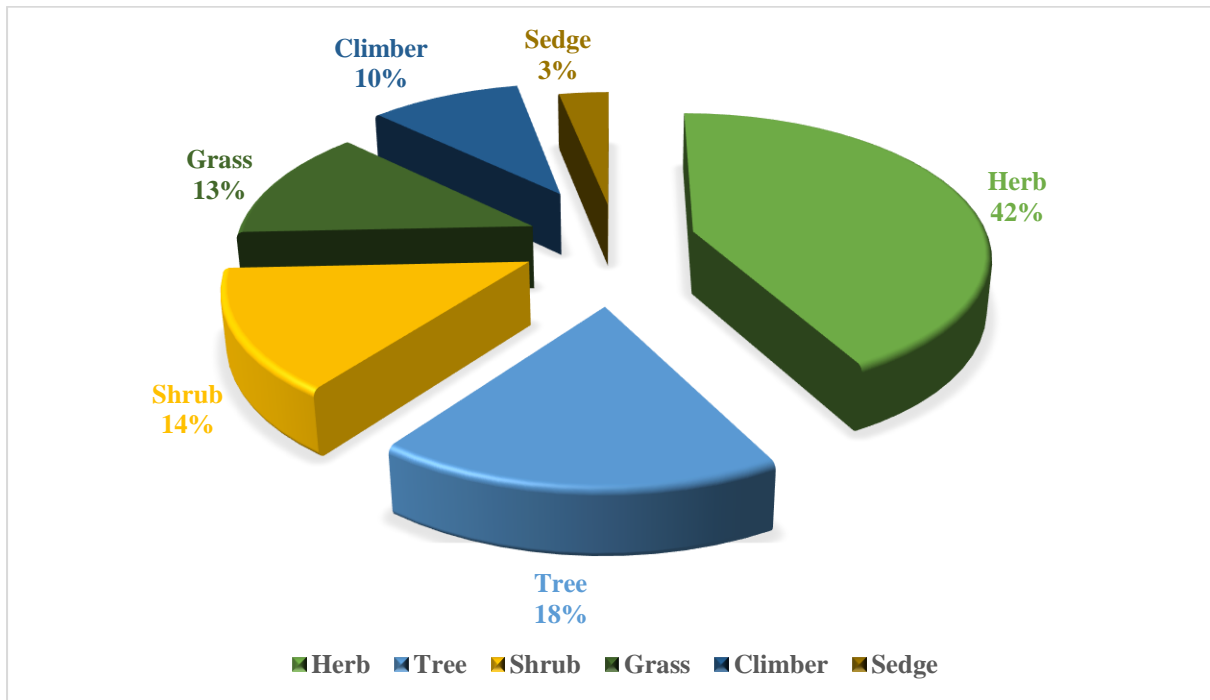


Figure 7. Habit organization of plant species in Sanctuary

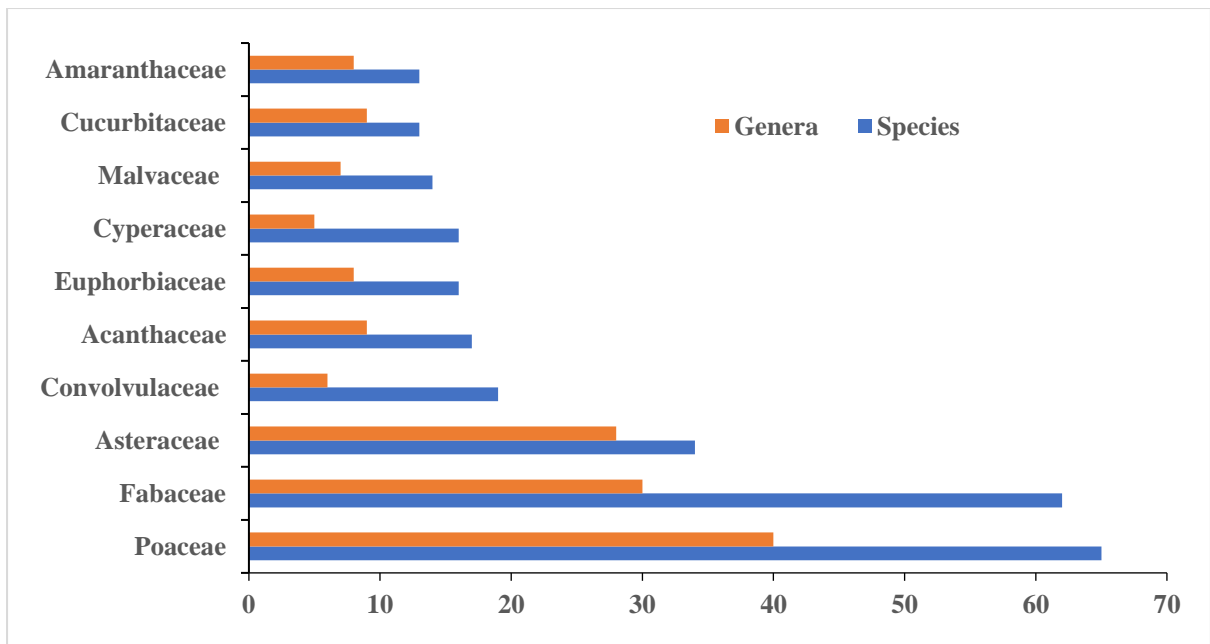


Figure 8. Dominant families of plants with number of genera and species in the Nahargarh Wildlife Sanctuary.

Table 2.: List of species recorded in Nahargarh Wildlife Sanctuary, Jaipur, classified according to Bentham and Hooker's system.

Families	Botanical Name	Local Name	Life Form
Dicot			
Annonaceae	<i>Annona squamosa</i> L.	Sitaphal	Tree
	<i>Polyalthia longifolia</i> (Sonnerat) Thw.	Ashok/ Ashapal	Tree
Menispermaceae	<i>Cissampelos pareira</i> L.	Patha/ Brihatika	Climber
	<i>Cocculus hirsutus</i> (L.) Diels.	Chhireta/ Bajar-bel/ Jal Jamani	Climber
	<i>Cocculus pendulus</i> (J.R. & G. Forst.) Diels	Pilwan/ Jal Jamani	Climber
	<i>Tinospora cordifolia</i> (Willd.) Miers	Giloi	Climber
Nymphaeaceae	<i>Nymphaea nauchali</i> Burm. f.	Kumudini	Herb
	<i>Nymphaea pubescens</i> Willd.		Herb
Papaveraceae	<i>Argemone mexicana</i> L. f.	Satyanasi/ Pili- Kateli	Herb
	<i>Argemone ochroleuca</i> Sweet	Satyanasi/ Pili- Kateli	Herb
Fumariaceae	<i>Fumaria indica</i> (Hausk.) Pugsley	Pit-papra/Papada	Herb
Brassicaceae	<i>Farsetia hamiltonii</i> Royle (Figure 4H)	Hiran Chabba	Herb
	<i>Lepidium didymum</i> L.	Pitpapra	Herb
	<i>Sisymbrium irio</i> L.	Asalio	Herb
Cleomaceae	<i>Cleome viscosa</i> L.	Handi-bagro/Pili- hulhul	Herb
Capparaceae	<i>Capparis decidua</i> (Forssk.) Edgew. (Figure 3C)	Ker	Shrub
	<i>Capparis sepiaria</i> L.	Jal/ Chhail	Shrub
	<i>Crateva adansonii</i> DC. (Figure 2D)	Barna/ Narnohi	Tree
	<i>Maerua oblongifolia</i> (Forssk) A. Rich. (Figure 4D)	Hemkand	Climber
Violaceae	<i>Hybanthus enneaspermus</i> (L.) Muell.	Ratanpurus	Herb
Flacourtiaceae	<i>Flacourtia indica</i> (Burm. f.) Merrill	Kanked	Tree
Polygalaceae	<i>Polygala erioptera</i> DC. (Figure 4B)	Sarbhagolia	Herb
Caryophyllaceae	<i>Polycarpaea corymbosa</i> (L.) Lam.		Herb
	<i>Polycarpon prostratum</i> (Forssk.) Asch. & Schweinf.		Herb
	<i>Spergula fallax</i> (Lowe) E.H.L. Krause		Herb
	<i>Stellaria media</i> (L.) Vill.	Buch-bucha	Herb
Portulacaceae	<i>Portulaca oleracea</i> L.		Herb
	<i>Portulaca pilosa</i> L.		Herb
Elatinacea	<i>Bergia ammannioides</i> Roxb. ex Roth.	Jalbhagara	Herb
Malvaceae	<i>Abelmoschus ficulneus</i> (L.) Wt. & Arn. ex wight	Malbhindi, Jangli bhindi, Ran bhendi	Shrub
	<i>Abutilon bidentatum</i> Hochest. ex A. Rich.		Herb
	<i>Abutilon indicum</i> (L.) Sweet	Kanghi	Shrub
	<i>Abutilon ramosum</i> (Cay.) Guill. & Perr.		Shrub
	<i>Hibiscus lobatus</i> (Murr.) O. Kuntze		Herb
	<i>Hibiscus micranthus</i> L. f.		Shrub
	<i>Hibiscus rosa-sinensis</i> L.	Gudhal	Shrub
	<i>Malva parviflora</i> L. Demonstr.	Golio	Herb
	<i>Malvastrum coromandelianum</i> (L.) Garcke	Kharenti	Herb
	<i>Pavonia zeylanica</i> (L.) Cay.		Herb
	<i>Sida acuta</i> Burm. f.	Bal	Herb
	<i>Sida cordata</i> (Burm. f.) Morss.		Herb
	<i>Sida ovata</i> Forssk	Dabi	Shrub
	<i>Sida rhombifolia</i> L.		Herb

Bombacaceae	<i>Adansonia digitata</i> L.	Kalpvrksha	Tree
	<i>Bombax ceiba</i> L.	Semal	Tree
	<i>Ceiba pentandra</i> (L.) Gaertn.		Tree
Sterculiaceae	<i>Guazuma ulmifolia</i> Lam.	Rudrakshi	Tree
	<i>Helicteres isora</i> L.	Maror phali	Shrub
	<i>Melhania futteyporensis</i> Munro ex Mast.		Shrub
	<i>Melochia corchorifolia</i> L.	Chitrabeez	Herb
	<i>Sterculia urens</i> Roxb. (Figure 2B)	Kulu	Tree
	<i>Waltheria indica</i> L.		Shrub
Tiliaceae	<i>Corchorus aestuans</i> L.	Hade-ka-khet	Herb
	<i>Corchorus depressus</i> (L.) Stocks	Chamkash/ Baphuli	Herb
	<i>Corchorus tridens</i> L.		Herb
	<i>Grewia asiatica</i> L.	Phalsa	Tree
	<i>Grewia damine</i> Gaertn.	Bihul	Shrub
	<i>Grewia flavescens</i> A. Juss.		Shrub
	<i>Grewia tenax</i> (Forssk.) Fiori	Gangrain/ Gangeti	Shrub
	<i>Triumfetta pentandra</i> A. Rich.	Mandli	Herb
	<i>Triumfetta rhomboidea</i> Jacq.	Lapta	Shrub
Zygophyllaceae	<i>Fagonia cretica</i> L./ <i>F. indica</i> Burm. f.	Dhamasa	Shrub
	<i>Tribulus lanuginosus</i> L.		Herb
	<i>Tribulus terrestris</i> L.	Gokhru/Kanti	Herb
Geraniaceae	<i>Monsonia senegalensis</i> Guill. & Perr. (Figure 4G)		Herb
Oxalidaceae	<i>Oxalis corniculata</i> L.	Kharto	Herb
Rutaceae	<i>Aegle marmelos</i> (L.) Corr.	Bel	Tree
	<i>Citrus limon</i> (L.) Burm. f.	Nimbu	Tree
	<i>Murraya koenigii</i> (L.) Spreng	Meetha Neem	Shrub
	<i>Naringi crenulata</i> (Roxb.) Nicolson (Figure 3A)	Beli	Tree
Simaroubaceae	<i>Ailanthus excelsa</i> Roxb.	Arru	Tree
Balanitaceae	<i>Balanites aegyptiaca</i> (L.) Del.	Hingotia	Tree
Burseraceae	<i>Boswellia serrata</i> Roxb. ex Coleb. (Figure 2E)	Salar	Tree
	<i>Commiphora wightii</i> (Arn.) Bhandari	Gugal	Shrub
Meliaceae	<i>Azadirachta indica</i> A. Juss.	Neem	Tree
	<i>Melia azedarach</i> L.	Bakain	Tree
Celastraceae	<i>Maytenus emarginatus</i> (Willd.) Ding Hou (Figure 3I)	Kaked	Shrub
Rhamnaceae	<i>Ziziphus mauritiana</i> Lam./ <i>Z. jujuba</i> Lam.	Bara bor/ Pemji bor	Tree
	<i>Ziziphus nummularia</i> (Burm. f.) Wight & Arn.	Bordi/ Jharber	Shrub
Vitaceae	<i>Ampelocissus latifolia</i> (Roxb.) Planch.	Pani-bel, Musal	Climber
	<i>Causonis trifolia</i> (L.) Mabb. & J. Wen / <i>Cayratia trifolia</i> (L.) Domin	Char/ Amalbel	Climber
	<i>Cissus quadrangularis</i> L.	Hadjod	Climber
Sapindaceae	<i>Cardiospermum halicacabum</i> L.	Chirphuta/ Kanphuta	Climber
	<i>Dodonaea viscosa</i> Jacq.	Vilayti-Mehndi	Shrub
Anacardiaceae	<i>Lannea coromandelica</i> (Houtt.) Merr. (Figure 3D)	Jhingan, Gurjan	Tree
	<i>Mangifera indica</i> L.	Aam	Tree
	<i>Rhus mysurensis</i> G. Don/ <i>Rhus sinuata</i> Thunb. (Figure 3G)	Dansara	Shrub
Moringaceae	<i>Moringa oleifera</i> Lam.	Sainjana	Tree
Fabaceae	<i>Abrus precatorius</i> L. (Figure 5D)	Chirmi/ Ratti	Climber
	<i>Aeschynomene indica</i> L.	Chhuimui	Herb
	<i>Albizia lebbek</i> (L.) Benth.	Siras	Tree

<i>Albizia odoratissima</i> (L. f.) Benth.	Kali Siras	Tree
<i>Alysicarpus bupleurifolius</i> (L.) DC.	Lalphuli	Herb
<i>Alysicarpus hamosus</i> Edgew. /A. <i>procumbens</i> (Roxb.) Schindl.		Herb
<i>Alysicarpus longifolius</i> (Rott. ex Spreng.) Wt. & Am.	Gubal	Herb
<i>Alysicarpus monilifer</i> (L.) DC.		Herb
<i>Alysicarpus vaginalis</i> (L.) DC.	Chauli/ Sauri	Herb
<i>Bauhinia racemosa</i> Lam. (Figure 3B)	Seta/ Jhira	Tree
<i>Bauhinia variegata</i> L.	Kachnar	Tree
<i>Butea monosperma</i> (Lam.) Taub. (Figure 2F)	Palas/Kesu	Tree
<i>Caesalpinia bonduc</i> (L.) Roxb.	Katkaranj	Climber
<i>Caesalpinia pulcherrima</i> (L.) Sw.		Shrub
<i>Cassia fistula</i> L.	Amaltas	Tree
<i>Chamaecrista mimosoides</i> (L.) Greene	Patwa ghas	Shrub
<i>Chamaecrista absus</i> (L.) H.S. Irwin & Barneby / <i>Cassia absus</i> L.	Chimar/ Chiksi	Herb
<i>Clitoria ternatea</i> L.	Gokarni/ Aparajita	Climber
<i>Crotalaria burhia</i> Buch. - Ham. ex Benth.	Saniya/ Khimp	Herb
<i>Crotalaria medicaginea</i> Lam.	Gulali	Herb
<i>Crotalaria hirsuta</i> Willd.	Hairy Rattlepod	Herb
<i>Dalbergia paniculata</i> Roxb.	Takoli	Tree
<i>Dalbergia sissoo</i> Roxb.	Sisum	Tree
<i>Delonix regia</i> (Boj. ex Hook.) Raf.	Gulmohar	Tree
<i>Desmodium gangeticum</i> (L.) DC	Salpiani/ Kareti	Shrub
<i>Desmodium triflorum</i> (L.) DC.	Kudaliya/ Motha	Herb
<i>Dichrostachys cinerea</i> (L.) Wight & Arn.	Goya-Khair/ Kunali	Shrub
<i>Erythrina variegata</i> L.	Pangara	Tree
<i>Indigofera astragalina</i> DC.	Dagadia	Herb
<i>Indigofera cordifolia</i> Heyne ex Roth	Bakario/ Meh-phuli	Herb
<i>Indigofera linnaei</i> Ali	Leel/ Latahai	Herb
<i>Indigofera sessiliflora</i> DC.		Herb
<i>Leucaena leucocephala</i> (Lam.) de Wit	Subabul	Tree
<i>Medicago polymorpha</i> L.		Herb
<i>Melilotus indica</i> (L.) All.	Morila	Herb
<i>Parkinsonia aculeata</i> L.	Vilayti kikar	Tree
<i>Pithecellobium dulce</i> (Roxb.) Benth.	Jangle Jalebi	Tree
<i>Pongamia pinnata</i> (L.) Pierre	Karanj/ Kalinga	Tree
<i>Prosopis cineraria</i> (L.) Druce	Khejri	Tree
<i>Prosopis juliflora</i> DC.	Bilayati-babul	Tree
<i>Rhynchosia minima</i> (L.) DC.	Kulata/ Kulthi	Herb
<i>Senegalia catechu</i> (L.f.) P. J. H. Hurter & Mabb. / <i>Acacia catechu</i> (L.f.) Willd	Katha/ Khair	Tree
<i>Senegalia ferruginea</i> (DC.) Pedley / <i>Acacia ferruginea</i> DC.	Safed khair	Tree
<i>Senegalia senegal</i> (L.) Britton / <i>Acacia senegal</i> Senu O. B. Mill.	Kumatiyo/ Kumbat	Tree
<i>Senna tora</i> (L.) Roxb. / <i>Cassia tora</i> L.	Puadia/ Panwar	Herb
<i>Senna auriculata</i> (L.) Roxb. / <i>Cassia auriculata</i> L.	Tarwar	Shrub
<i>Senna obtusifolia</i> (L.) H.S. Irwin & Barneby / <i>Cassia obtusifolia</i> L.	Panwar/ Chakvat	Shrub
<i>Senna occidentalis</i> (L.) Link. / <i>Cassia occidentalis</i> L.	Chakundra/ Kasunda	Shrub
<i>Senna siamea</i> (Lam.) H.S. Irwin & Barneby / <i>Cassia siamea</i> L.	Kassod	Tree
<i>Sesbania sesban</i> (L.) Merr.	Jayanti	Shrub

	<i>Tamarindus indica</i> L. (Figure 2H)	Imli	Tree
	<i>Tephrosia pumila</i> (Lam.) Pers.		Herb
	<i>Tephrosia purpurea</i> (L.) Pers.		Herb
	<i>Tephrosia strigosa</i> (Dalz.) Sant. & Mahesh.		Herb
	<i>Tephrosia villosa</i> (L.) Pers.	Sarfonka	Herb
	<i>Vachellia jacquemontii</i> (Benth.) Ali / <i>Acacia jacquemontii</i> Benth. (Figure 3F)	Bhubavali/ Bali	Shrub
	<i>Vachellia leucophloea</i> (Roxb.) Maslin, Seigler & Ebinger / <i>Acacia leucophloea</i> (Roxb.) Willd. (Figure 2C)	Urajio/ Ranj	Tree
	<i>Vachellia nilotica</i> (L.) P.J.H. Hurter & Mabb. / <i>Acacia nilotica</i> (L.) Del.	Babul/Kikar	Tree
	<i>Vachellia tortilis</i> (Forssk.) Galasso & Banfi / <i>Acacia tortilis</i> (Forssk.) Hayne	Israeli babool	Tree
	<i>Vigna aconitifolia</i> (Jacq.) Marechal	Month Bean	Herb
	<i>Vigna trilobata</i> (L.) Verdc.	Mungi	Herb
	<i>Zornia gibbosa</i> Span.		Herb
Rosaceae	<i>Potentilla supina</i> L.		Herb
Combretaceae	<i>Anogeissus pendula</i> Edgew. (Figure 2G)	Dhok	Tree
	<i>Anogeissus sericea</i> var. <i>sericea</i> Brandis.	Indradhok, Indrokh	Tree
	<i>Comberatum indicum</i> (L.) Jongkind		Climber
	<i>Terminalia arjuna</i> (Roxb. ex DC.) Wight & Arn.	Arjun	Tree
	<i>Terminalia catappa</i> L.	Desi Badam	Tree
Myrtaceae	<i>Eucalyptus camaldulensis</i> Dehnb.		Tree
	<i>Melaleuca viminalis</i> (Sol. Ex Gaertn.) Byrnes / <i>Callistemon viminalis</i> (Sol. Ex Gaertn.) G.Don	Cheel / Bottle brush	Tree
	<i>Psidium guajava</i> L.	Amrood	Tree
	<i>Syzygium cumini</i> (L.) Skeels	Jamun	Tree
Lythraceae	<i>Ammannia baccifera</i> L.	Aginbuti/ mirich	Ban Herb
	<i>Ammannia auriculata</i> Willd.	Jangli Mehndi	Herb
	<i>Lawsonia inermis</i> L.	Mehndi	Shrub
Punicaceae	<i>Punica granatum</i> L.	Anar	Shrub
Onagraceae	<i>Ludwigia prostrata</i> Roxb. (Figure 3H)		Herb
Cucurbitaceae	<i>Ctenolepis cerasiformis</i> (Stocks) Naudin	Ankh phutani ki bel	Climber
	<i>Ctenolepis garcinii</i> (Burm.f.) Naud.		Climber
	<i>Citrullus colocynthis</i> (L.) Schrad.	Tumba/ Indrayan	Climber
	<i>Coccinia grandis</i> (L.) J.O. Voigt	Golan/ Kundru	Climber
	<i>Cucumis callosus</i> (Rottl.) Cogn.	Kachri	Climber
	<i>Cucumis melo</i> L.	Kharbuja	Climber
	<i>Cucumis prophetarum</i> L.	Khad-Kachar	Climber
	<i>Diplocyclos palmatus</i> (L) Jeffry (Figure 4F)	Bon kakra/ Shivlingi	Climber
	<i>Luffa echinata</i> Roxb.	Duttar-Toru	Climber
	<i>Momordica balsamina</i> L.	Jangli karela	Climber
	<i>Momordica dioica</i> Roxb. ex Willd.	Kakoda	Climber
	<i>Mukia maderaspatana</i> (L.) M. Roem.	Ankh phutani ki bel	Climber
	<i>Trichosanthes dioica</i> Roxb.	Palwal	Climber
Caricaceae	<i>Carica papaya</i> L.	Papita	Tree
Cactaceae	<i>Opuntia dillenii</i> (Ker. - Gawl.) Haworth	Nagnithore	Shrub
Aizoaceae	<i>Trianthema portulacastrum</i> L.	Sabuni/ Svetsabuni	Herb
	<i>Zaleya govindia</i> (Buch. - Ham. ex. G. Don) Nair		Herb
Molluginacea	<i>Glinus lotoides</i> L.	Gandhi buti	Herb
	<i>Gisekia pharmaceoides</i> L.		Herb
	<i>Mollugo nudicaulis</i> Lam.		Herb
	<i>Mollugo pentaphylla</i> L.		Herb

Rubiaceae	<i>Hamelia patens</i> Jacq.		Shrub
	<i>Mitragyna parviflora</i> (Roxb.) Korth.	Kadam	Tree
	<i>Oldenlandia corymbosa</i> L.	Daman Pitpapa	pappar/ Herb
	<i>Spermacoce articularis</i> L.f.		Herb
	<i>Spermacoce pusilla</i> Wall.	Safed phooli	Herb
Asteraceae	<i>Acanthospermum hispidum</i> DC.		Herb
	<i>Ageratum conyzoides</i> L.	Bhakumber/ pudina	Jangli Herb
	<i>Artemisia scoparia</i> Waldst. & Kit.	Seeta-bani	Herb
	<i>Bidens bipinnata</i> L.		Herb
	<i>Bidens biternata</i> (Lour.) Merr. & Sherff ex Sherff	Chirchitta	Herb
	<i>Blainvillea acmella</i> (L.) Philipson	Kanghi	Herb
	<i>Blumea lacera</i> (Burm. f.) DC.	Jangli muli	Herb
	<i>Blumea obliqua</i> (L.) Druce		Herb
	<i>Centipeda minima</i> (L.) A.Braun & Asch. (Figure 4I)	Nakchhikni	Herb
	<i>Conyza aegyptiaca</i> (L.) W. Ait.		Herb
	<i>Dicoma tomentosa</i> Cass.		Herb
	<i>Echinops echinatus</i> . Roxb.	Oont-kateli	Herb
	<i>Eclipta prostrata</i> (L.) L.	Jalmagra	Herb
	<i>Emilia sonchifolia</i> (L.) DC.	Hirankhuri	Herb
	<i>Erigeron bonariensis</i> L.		Herb
	<i>Glossocardia bosvallea</i> (L. f.) DC.	Chiriya ka chugga/ Patthar suva	Herb
	<i>Gnaphalium polycaulon</i> Pers.	Kharsiya	Herb
	<i>Grangea maderaspatana</i> (L.) Poir	Mustaru	Herb
	<i>Laggera alata</i> (D. Don.) Schultz - Bip. ex Oliver		Herb
	<i>Launaea procumbens</i> (Roxb.) Ramayya & Rajagopal	Pathari	Herb
	<i>Launaea remotiflora</i> DC.		Herb
	<i>Oligochaeta ramosa</i> (Roxb.) Wagen. (Figure 5B)	Unt Baraward	kantilo/ Herb
	<i>Parthenium hysterophorus</i> L.	Gajar ghas	Herb
	<i>Pseudognaphalium luteoalbum</i> (L.) Hilliard & B.L.Burt		Herb
	<i>Pulicaria angustifolia</i> DC.		Herb
	<i>Pulicaria crispa</i> (Forssk.) Oliv.	Haldwa	Herb
	<i>Sclerocarpus africanus</i> Jacq.		Herb
	<i>Sonchus asper</i> (L.) Hill.	Dudhi	Herb
	<i>Sonchus oleraceus</i> L.		Herb
	<i>Tridax procumbens</i> L.	Kanphuli/ Kumra	Herb
	<i>Verbesina encelioides</i> (Cav.) Benth. & Hook. f. ex A. Grey		Herb
	<i>Vernonia cinerea</i> (L.) Less.	Sahadevi	Herb
	<i>Vernonia cinerascens</i> Sch.Bip.	Grey Vernonia	Shrub
<i>Xanthium strumarium</i> L. / <i>X. indicum</i> Koen.	Adhasisi/ Chirchita	Herb	
Plumbaginaceae	<i>Dyerophytum indicum</i> (Gibs. ex Wt.) O. Ktze. (Figure 5A)		Shrub
	<i>Plumbago zeylanica</i> L.	Chitrak	Shrub
Primulaceae	<i>Anagallis arvensis</i> L.	Neel	Herb
Sapotaceae	<i>Manilkara hexandra</i> (Roxb.) Dub.	Khirmi	Tree
	<i>Mimusops elengi</i> L.	Morsali	Tree
Ebenaceae	<i>Diospyros melanoxylon</i> Roxb.	Tendu	Tree
Oleaceae	<i>Jasminum officinale</i> L.	Chameli	Climber
	<i>Jasminum sambac</i> (L.) Ait.	Mogra	Shrub
	<i>Nyctanthes arbor-tristis</i> L.	Harsingar	Shrub

Salvadoraceae	<i>Salvadora oleoides</i> Decne	Pilu/ Khara Jal	Tree
	<i>Salvadora persica</i> L.	Pilu/ Mitha Jal	Tree
Apocynaceae	<i>Alstonia scholaris</i> (L.) R. Br.	Chitvan/ Saptaparna	Tree
	<i>Carissa carandas</i> L.	Karonda	Shrub
	<i>Carissa congesta</i> Wight.	Karaunda	Shrub
	<i>Cascabela thevetia</i> (L.) Lippold	Peeli kaner	Tree
	<i>Catharanthus pusillus</i> (Murr.) G. Don	Hingmu	Herb
	<i>Catharanthus roseus</i> (L.) G. Don.	Sadaphuli	Herb
	<i>Dregea volubilis</i> (L.fil.) Benthum ex J.D.Hook.	Akad bel	Climber
	<i>Ichnocarpus frutescens</i> (L.) R. Br.	Kali Dudhi	Climber
	<i>Nerium indicum</i> Mill.	Kaner	Shrub
	<i>Plumeria rubra</i> L.	Champa/ Golachin	Tree
	<i>Tabernaemontana divaricata</i> (L.) R.Br. ex Roem. & Schult.	Chandni	Tree
Asclepiadaceae	<i>Wrightia tinctoria</i> (Roxb.) R. Br. (Figure 2A)	Dudhi, Karu, Kerni	Tree
	<i>Calotropis gigantea</i> (L.) R. Br.	Shiv Aak	Shrub
	<i>Calotropis procera</i> (Ait.) R. Br.	Madar Aak	Shrub
	<i>Ceropegia bulbosa</i> Roxb. (Figure 5C)	Hedulo/ Khadula	Herb
	<i>Leptadenia pyrotechnica</i> (Forsk.) Decne.	Khimp	Shrub
	<i>Pergularia daemia</i> (Forsk.) Chiov.	Gadaria ki bel	Climber
	<i>Tylophora indica</i> (Burn. f.) Merr.	Dambel	Climber
Loganiaceae	<i>Spigelia anthelmia</i> L.		Herb
Periplocaceae	<i>Cryptostegia grandiflora</i> R. Br. ex Lindl.	Rubber ki bel	Climber
Boraginaceae	<i>Arnebia hispidissima</i> (Lehm.) DC. (Figure 5E)	Ram Bui	Herb
	<i>Heliotropium marifolium</i> Retz.		Herb
	<i>Heliotropium strigosum</i> Willd.	Arkali	Herb
	<i>Heliotropium supinum</i> L.		Herb
	<i>Sericostoma pauciflorum</i> Stocks ex Wt.		Shrub
	<i>Trichodesma indicum</i> (L.) R. Br.	Chhota Kalpa	Herb
Ehretiaceae	<i>Cordia dichotoma</i> Forst. f.	Lasora	Tree
	<i>Cordia sebestena</i> L.	Lal Lasora	Tree
	<i>Cordia sinensis</i> Lam.	Gondni	Tree
	<i>Ehretia laevis</i> Roxb. (Figure 2I)	Tamboli/ Chamror	Tree
Convolvulaceae	<i>Argyreia nervosa</i> (Burm. f.) Boj.	Ghav bel/ Samudrasokh	Climber
	<i>Convolvulus arvensis</i> L.	Hiranpangi	Herb
	<i>Convolvulus prostratus</i> Forssk.	Santari/ Santar	Herb
	<i>Evolvulus alsinoides</i> (L.) L.	Visnukrantha	Herb
	<i>Evolvulus nummularius</i> (L.) L.		Herb
	<i>Ipomoea cairica</i> (L.) Sweet	Railway creeper	Climber
	<i>Ipomoea carnea</i> Jacq.		Shrub
	<i>Ipomoea coptica</i> (L.) Roth (Figure 4C)		Climber
	<i>Ipomoea eriocarpa</i> R. Br.	Boota/ Ghia bato	Climber
	<i>Ipomoea indica</i> (Burm. f.) Merr.	Morning Glory	Climber
	<i>Ipomoea nil</i> (L.) Roth	Gheta/ Nilkalmi	Climber
	<i>Ipomoea pes-tigridis</i> L.	Panchpatia	Climber
	<i>Ipomoea sindica</i> Stapf		Climber
	<i>Ipomoea triloba</i> L.		Climber
	<i>Ipomoea turbinate</i> Lag.		Climber
	<i>Merremia aegyptiaca</i> (L.) Urban	Rota bel	Climber
	<i>Merremia dissecta</i> (Jacq.) Hall. f.		Climber
	<i>Merremia emarginata</i> (Burm. f.) Hall. f.	Popli/ Musakani	Climber
	<i>Rivea hypocrateriformis</i> (Desr.) Choisy		Climber
	Cuscutaceae	<i>Cuscuta reflexa</i> Roth.	Akash bel
Solanaceae	<i>Datura innoxia</i> Mk	Safed Dhatura	Shrub

	<i>Datura stramonium</i> L.		Herb
	<i>Lycium barbarum</i> L.	Morali	Shrub
	<i>Physalis angulata</i> L.		Herb
	<i>Physalis maxima</i> L.		Herb
	<i>Physalis minima</i> L.	Papotan	Herb
	<i>Solanum americanum</i> Mill.		Herb
	<i>Solanum incanum</i> L.	Bhutkataiya	Shrub
	<i>Solanum nigrum</i> L.	Makoy	Herb
	<i>Solanum villosum</i> Mill.		Herb
	<i>Solanum virginianum</i> L.	Baigan kateli	Herb
	<i>Withania somnifera</i> (L.) Dunal	Asgandh	Shrub
Scrophulariaceae	<i>Bacopa monnieri</i> (L.) Wettst.	Brahmi	Herb
	<i>Lindenbergia indica</i> (L.) Vatke	Pili buti	Herb
	<i>Lindernia ciliata</i> (Colsm.) Pennell		Herb
	<i>Lindernia crustacea</i> (L.) F. Muell.		Herb
	<i>Nanorrhinum ramosissimum</i> (Wall.) Betsche / <i>Kickxia ramosissimum</i> (Wall.) Zanchen	Khunger booti	Herb
	<i>Striga angustifolia</i> (D. Don) Saldhana		Herb
	<i>Striga gesnerioides</i> (Willd.) Vatke (Figure 5H)		Herb
	<i>Veronica anagallis - aquatica</i> L.	Sada/Sadevi	Herb
Bignoniaceae	<i>Fernando adenophylla</i> (Wall. ex G. Don.)	Marodphali	Tree
	<i>Jacaranda mimosifolia</i>	Neeli Gulmohar	Tree
	<i>Kigelia africana</i> (Lam.) Benth.	Balam Khira	Tree
	<i>Millingtonia hortensis</i> L.	Neem Chameli	Tree
	<i>Tabebuia aurea</i> Benth. & Hook.f. ex. S. Moore		Tree
	<i>Tecoma stans</i> (L.) Juss. ex Kunth	Piliya	Shrub
	<i>Tecomella undulata</i> (Sm.) Seem.	Rohida	Tree
Pedaliaceae	<i>Pedaliium murex</i> L.	Bara gokhuru	Herb
	<i>Sesamum indicum</i> L.	Til	Herb
Martyniaceae	<i>Martynia annua</i> L. (Figure 3E)	Billi	Herb
Acanthaceae	<i>Barleria cristata</i> L.		Shrub
	<i>Barleria prionitis</i> L.	Pila piyabansa	Shrub
	<i>Blepharis maderaspatensis</i> (L.) Heyne ex Roth	Dudhiya choti	Herb
	<i>Blepharis repens</i> (Vahl) Roth / <i>Blepharis integrifolia</i> (L.f.) E.Mey. & Drege ex Schinz		Herb
	<i>Blepharis sindica</i> Stocks ex T.Anderson (Figure 5I)		Herb
	<i>Elytraria acaulis</i> (L. f.) Lindau		Herb
	<i>Indoneesiella echioides</i> (L.) Sreem. / <i>Andrographisechioides</i> (L.) Nees	Pathar chatta	Herb
	<i>Justicia adhatoda</i> L./ <i>Adhatoda zeylanica</i> Medic.	Adusa	Shrub
	<i>Justicia heterocarpa</i> T. Anderson		Herb
	<i>Justicia quinqueangularis</i> Koen. Ex Roxb.		Herb
	<i>Justicia simplex</i> D. Don.	Kagner	Herb
	<i>Lepidagathis cristata</i> Willd.		Herb
	<i>Lepidagathis trinervis</i> Wall. ex Nees (Figure 5G)	Pathar phor	Herb
	<i>Peristrophe paniculata</i> (Forsk.) Brummitt / <i>Dicliptera paniculata</i> (Forssk.) I. Darbysh.	Atrilal	Herb
	<i>Rostellularia procumbens</i> (L.) Nees / <i>Justicia procumbens</i> L.		Herb

	<i>Ruellia prostrata</i> Poir.		Herb
	<i>Ruellia tuberosa</i> L.		Shrub
Verbenaceae	<i>Clerodendrum inerme</i> (L.) Gaertn.	Sankuppi	Shrub
	<i>Clerodendrum phlomidis</i> L. f.	Arni	Shrub
	<i>Duranta repens</i> L.		Shrub
	<i>Lantana camara</i> L.	Raimuniya	Shrub
	<i>Lantana indica</i> Roxb.	Panjphulli	Shrub
	<i>Phyla nodiflora</i> (L.) Greene (Figure 4A)	Jal butti	Herb
	<i>Tectona grandis</i> L. f.	Sagwan	Tree
	<i>Vitex negundo</i> L.	Nirgundi	Shrub
Lamiaceae	<i>Anisochilus carnosus</i> (L. f.) Wall. (Figure 5F)	Panjiri	Herb
	<i>Anisomeles indica</i> (L.) O. Ktze.	Kala bhangra	Herb
	<i>Hyptis suaveolens</i> (L.) Poit. (Figure 4E)	Vilaiti tulsi	Herb
	<i>Leucas aspera</i> (Willd.) Link	Chhota halkusa	Herb
	<i>Leucas cephalotes</i> (Koen. ex Roth) Spreng.	Udapata	Herb
	<i>Leucas urticifolia</i> (Vahl) R. Br.		Herb
	<i>Mentha spicata</i> L.	Pudina	Herb
	<i>Ocimum americanum</i> L./ <i>O. canum</i> Sims.	Kali tulsi	Herb
	<i>Ocimum basilicum</i> L.	Ram tulsi	Herb
	<i>Ocimum tenuiflorum</i> L.	Tulsi	Shrub
Nyctaginaceae	<i>Boerhavia diffusa</i> L.	Satha/ Punarnava	Herb
	<i>Boerhavia erecta</i> L.	Shweta	Herb
	<i>Bougainvillea glabra</i> Choisy		Shrub
	<i>Bougainvillea spectabilis</i> Willd.	Booganbel	Shrub
	<i>Mirabilis jalapa</i> L.	Gul abbas	Herb
Amaranthaceae	<i>Achyranthes aspera</i> L.	Andhi jhara	Herb
	<i>Achyranthes aspera</i> var. <i>argentea</i> (Lam.) Boiss.		Herb
	<i>Achyranthes bidentata</i> Blume	Putkanda	Herb
	<i>Aerva javanica</i> (Burm. f.) Juss. ex Schult.	Bui	Herb
	<i>Alternanthera pungens</i> Kunth	Kante wali santi	Herb
	<i>Alternanthera sessilis</i> (L.) R. Br. ex DC.	Nari ka bam/ Bhaji	Herb
	<i>Amaranthus palmeri</i> Wats.		Herb
	<i>Amaranthus spinosus</i> L.	Rajgira/ Kante wali chauli	Herb
	<i>Amaranthus viridis</i> L.	Jangli chaulai	Herb
	<i>Celosia argentea</i> L.	Surli garke	Herb
	<i>Digera muricata</i> (L.) Mart.	Lehsua/ Khanjru	Herb
	<i>Gomphrena celosioides</i> Mart.		Herb
	<i>Pupalia lappacea</i> (L.) Juss.	Nagadaminee	Herb
Chenopodiaceae	<i>Chenopodium album</i> L.	Bathua	Herb
	<i>Chenopodium murale</i> L.	Goyalo	Herb
Polygonaceae	<i>Antigonon leptopus</i> Hook. & Arn.		Climber
	<i>Polygonum plebeium</i> R. Br.	Chimati Saag	Herb
	<i>Rumex dentatus</i> L.	Ambavati/Jangli palak	Herb
Loranthaceae	<i>Dendrophthoe falcata</i> var. <i>falcata</i> (L. f.) Etting.	Banda	Shrub
Santalaceae	<i>Santalum album</i> L.	Chandan	Tree
Euphorbiaceae	<i>Acalypha indica</i> L.	Kuppi	Herb
	<i>Croton bonplandianum</i> Baill.	Kala bhangra	Herb
	<i>Euphorbia caducifolia</i> Haines.	Dandathor	Herb
	<i>Euphorbia hirta</i> L.	Dudhi	Herb
	<i>Euphorbia indica</i> Lam.		Herb
	<i>Euphorbia nerifolia</i> L.	Danda thor	Tree
	<i>Euphorbia prostrata</i> Aiton		Herb

	<i>Euphorbia pulcherrima</i> Willd.		Herb
	<i>Euphorbia thymifolia</i> L.	Chhota dudhi	Herb
	<i>Flueggea leucopyrus</i> Willd.	Shinar/ Ainta	Shrub
	<i>Jatropha integerrima</i> Jacq.		Shrub
	<i>Jatropha gossypifolia</i> L.	Mayla/ Ratanjoti	Shrub
	<i>Phyllanthus amarus</i> Schum. & Thom. / <i>P. niruri</i> Hook.	Gugario	Herb
	<i>Phyllanthus emblica</i> L.	Aamla	Tree
	<i>Putranjiva roxburghii</i> Wall.	Putranjiva	Tree
	<i>Ricinus communis</i> L.	Erandi/ Arand	Shrub
Ulmaceae	<i>Holoptelea integrifolia</i> (Roxb.) Planch.	Papri/ Churil	Tree
Moraceae	<i>Ficus arnottiana</i> (Miq.) Miq.	Bassari	Tree
	<i>Ficus benjamina</i> L.	Weeping Fig	Tree
	<i>Ficus benghalensis</i> L.	Bargad/ Bar	Tree
	<i>Ficus carica</i> L.	Fig	Tree
	<i>Ficus mollis</i> Vahl		Tree
	<i>Ficus racemosa</i> L. / <i>F. glomerata</i> Roxb.	Gular	Tree
	<i>Ficus religiosa</i> L.	Pipal	Tree
	<i>Ficus virens</i> W. T. Aiton	Pilkhan	Tree
	<i>Morus alba</i> L.	Sahtut	Tree
Ceratophyllaceae	<i>Ceratophyllum demersum</i> L.	Jal butti	Herb
Monocot			
Hydrocharitaceae	<i>Hydrilla verticillata</i> (L. f.) Royle	Jhangi/ Kureli	Herb
Cannaceae	<i>Canna indica</i> L.	Keli/ Sudarsan	Herb
Musaceae	<i>Musa paradisiaca</i> L.	Kela	Herb
Amaryllidaceae	<i>Crinum asiaticum</i> L.		Herb
Agavaceae	<i>Agave americana</i> L.		Herb
	<i>Zephyranthes grandiflora</i> Lindl.		Herb
Liliaceae	<i>Aloe vera</i> (L.) Burm. f.	Gheekumari	Herb
	<i>Asparagus racemosus</i> Willd.	Satawari	Climber
	<i>Asphodelus tenuifolius</i> Cay.		Herb
	<i>Gloriosa superba</i> L. (Figure 6A)	Kalihari	Herb
Commelinaceae	<i>Commelina benghalensis</i> L.	Bukana	Herb
	<i>Commelina erecta</i> L.	Kanshura	Herb
	<i>Commelina forsskalii</i> Vahl.	Kankawa	Herb
	<i>Cyanotis axillaris</i> (L.) D. Don ex Sweet	Kana	Herb
	<i>Cyanotis cristata</i> (L.) D. Don.		Herb
	<i>Murdannia nudiflora</i> (L.) Brenan (Figure 6B)	Kansura	Herb
	<i>Tradescantia pallida</i> (Rose) D. R. Hunt		Herb
Areaceae	<i>Phoenix sylvestris</i> (L.) Roxb.	Khajoor	Tree
Typhaceae	<i>Typha angustata</i> Bory & Chaub. (Figure 6C)	Patera/Pata	Herb
Lemnaceae	<i>Lemna minor</i> L.		Herb
	<i>Spirodela polyrhiza</i> (L.) Schleid.		Herb
	<i>Wolffia arrhiza</i> (L.) Horkel ex Wimm.		Herb
Cyperaceae	<i>Bolboschoenus maritimus</i> (L.) Palla / <i>Scirpus maritimus</i> L.		Sedge
	<i>Bulbostylis barbata</i> (Rottb.) Clarke		Sedge
	<i>Cyperus arenarius</i> Retz.		Sedge
	<i>Cyperus bulbosus</i> Vahl		Sedge
	<i>Cyperus compressus</i> L.		Sedge
	<i>Cyperus difformis</i> L.		Sedge
	<i>Cyperus fuscus</i> L.		Sedge
	<i>Cyperus imbricatus</i> Retz.		Sedge
	<i>Cyperus iria</i> L.		Sedge
	<i>Cyperus niveus</i> Retz. (Figure 6H)		Sedge
	<i>Cyperus pygmaeus</i> Rottb.		Sedge
<i>Cyperus rotundus</i> L. (Figure 6F)		Sedge	

	<i>Cyperus triceps</i> (Rottb.) Endl.		Sedge
	<i>Fimbristylis ferruginea</i> (L.) Vahl		Sedge
	<i>Fimbristylis quinquangularis</i> (Vahl) Kunth / <i>F. miliacea</i> (L.) Vahl		Sedge
	<i>Schoenoplectiella supina</i> (L.) Lye		Sedge
Poaceae	<i>Acrachne racemosa</i> (Heyne ex. Roem. & Schult.) Ohwi.		Grass
	<i>Aeluropus lagopoides</i> (L.) Trin. ex Thw.		Grass
	<i>Alloteropsis cimicina</i> (L.) Stapf.		Grass
	<i>Andropogon pumilus</i> Roxb.	Bhanjuri	Grass
	<i>Apluda mutica</i> L.	Phulkia/ Bhanjura	Grass
	<i>Aristida adscensionis</i> L.	Lamp/ Lampro	Grass
	<i>Aristida adscensionis</i> L. var. <i>pumila</i> (Decne.) Coss. & Dur.	Lappa	Grass
	<i>Aristida funiculata</i> Trin. & Rupr.		Grass
	<i>Aristida mutabilis</i> Trin. & Rupr.		Grass
	<i>Arundinella pumilla</i> (Hochst. ex A. Rich.) Steud.		Grass
	<i>Bambusa vulgaris</i> Schrad.	Bans	Grass
	<i>Bothriochloa pertusa</i> (L.) A. Camus	Karad	Grass
	<i>Brachiaria ramosa</i> (L.) Stapf	Kuri	Grass
	<i>Brachiaria reptans</i> (L.) Gardner & Hubbard		Grass
	<i>Cenchrus biflorus</i> Roxb.	Bhurat	Grass
	<i>Cenchrus ciliaris</i> L.	Neenjna	Grass
	<i>Cenchrus pennisetiformis</i> Hochst. & Steud. ex Steud	Dhamanio kaitai	Grass
	<i>Cenchrus prieurii</i> Maire	Lambo bhurat	Grass
	<i>Cenchrus setigerus</i> Vahl		Grass
	<i>Chloris dolichostachya</i> Lag.		Grass
	<i>Chloris virgata</i> Sw.		Grass
	<i>Cymbopogon citratus</i> (DC.) Stapf		Grass
	<i>Cynodon dactylon</i> (L.) Pers.	Doob	Grass
	<i>Dactyloctenium scindicum</i> Boiss.	Makra-ghas	Grass
	<i>Dactyloctenium aegyptium</i> (L.) Willd.		Grass
	<i>Dendrocalamus strictus</i> (Roxb.) Nees	Bans	Grass
	<i>Dichanthium annulatum</i> (Forssk.) Stapf	Karad	Grass
	<i>Digitaria ciliaris</i> (Retz.) Koeler		Grass
	<i>Digitaria longiflora</i> (Retz.) Pers.		Grass
	<i>Digitaria pennata</i> (Hochst.) T. Cooke		Grass
	<i>Digitaria setigera</i> Roth		Grass
	<i>Echinochloa colona</i> (L.) Link	Homa	Grass
	<i>Eleusine indica</i> (L.) Gaertn.		Grass
	<i>Eragrostiella bifaria</i> (Vahl.) Bor. (Figure 6E)		Grass
	<i>Eragrostis cilianensis</i> (All.) Vign. Ex Janchen		Grass
	<i>Eragrostis ciliaris</i> (L.) R. Br.	Under puncho	Grass
	<i>Eragrostis gangetica</i> (Roxb.) Steud.		Grass
	<i>Eragrostis pilosa</i> (L.) P. Beauv.		Grass
	<i>Eragrostis tenella</i> (L.) P. Beauv. ex Roem. & Schult.	Bharbhusi	Grass
	<i>Eragrostis tenuifolia</i> Hochst. ex Steud.		Grass
	<i>Eriochloa procera</i> (Retz.) C.E. Hubb.		Grass
	<i>Hemarthria compressa</i> (L. f.) R. Br.		Grass
	<i>Heteropogon contortus</i> (L.) P. Beauv. ex Roem. & Schult. (Figure 6D)	Kali-lamp	Grass
	<i>Imperata cylindrica</i> (L.) Raeuschel.	Uloo/ Khans	Grass
	<i>Melanocenchris jacquemontii</i> Jaub. & Spach.		Grass

<i>Oplismenus burmannii</i> (Retz.) P. Beauv.		Grass
<i>Panicum maximum</i> Jacq.		Grass
<i>Panicum notatum</i> Retz.		Grass
<i>Panicum paludosum</i> Roxb.		Grass
<i>Paspalidium flavidum</i> (Retz.) A. Camus	Chapri	Grass
<i>Paspalum dilatatum</i> Poir.		Grass
<i>Pennisetum hohenackeri</i> Hochst.		Grass
<i>Perotis indica</i> (L.) O. Ktze.		Grass
<i>Polypogon monspeliensis</i> (L.) Desf.		Grass
<i>Saccharum bengalense</i> Retz.		Grass
<i>Saccharum spontaneum</i> L.	Kans	Grass
<i>Setaria geniculata</i> (Lam.) P. Beauv.	Kutta	Grass
<i>Setaria glauca</i> (L.) P. Beauv.	Kutta	Grass
<i>Setaria pumila</i> (Poir.) Roem. & Schult.		Grass
<i>Setaria verticillata</i> (L.) P. Beauv.	Laptuna/ Latkaunya	Grass
<i>Sorghum halepense</i> (L.) Pers.	Baru/ Jangli jowar	Grass
<i>Sporobolus coromandelianus</i> (Retz.) Kunth.		Grass
<i>Sporobolus diander</i> (Retz.) P. Beauv.		Grass
<i>Tetrapogon tenellus</i> (Koen. ex Roxb.) Chiov. (Figure 6G)		Grass
<i>Tragus roxburghii</i> Panigrahi/ <i>T. biflorus</i> (Roxb.) Schult. (Figure 6I)		Grass

Anogeissus sericea plant species, which is threatened and endemic to Rajasthan. Previously, this plant species was found exclusively in seven districts: Sirohi (Mount Abu), Alwar, Udaipur, Sikar, Banswara, Rajsamand, and Jalore. This work focuses on the inventory of angiosperms to establish a comprehensive checklist of the sanctuary's floristic wealth, which will be essential for guiding sustainable resource utilization, conservation strategies, and the management of plant diversity.

References

1. Singh JS 2002, The biodiversity crisis: a multifaceted review. *Current Science* **82**(6) 638–647.
2. Wilson EO 1988, The Current State of Biological diversity. In: *Biodiversity* Wilson EO and Peters FM (eds.). National Academy Press. 3-18.
3. Ehrlich PR and Wilson EO 1991, Biodiversity studies: Science and policy. *Science* **253**(5021) 758-762.
4. Holdgate MW 1996, The ecological significance of biological diversity. *Ambio*. **25**(1) 21-26.
5. Tilman D 2000, Causes, consequences and ethics of biodiversity. *Nature* **405**(6783) 208-211.
6. Millennium Ecosystem Assessment (MEA) 2005, *Ecosystems and Human Well-being: Biodiversity Synthesis*. World Resources Institute. Island Press Washington, D.C.
7. Rao RR 2012, Floristic diversity in Western ghats: documentation, conservation and bioprospection– a priority agenda for action. *SahyDRI e-news* (38) 2-38.

Acknowledgements

Authors are grateful to the Council of Scientific and Industrial Research (CSIR) for funding.

Naveen Kumar – Ref.no: 17/12/2017 (ii) EU-V. We thank University of Rajasthan for providing research and Development Grant. We are also grateful to the forest officials of different areas for allowing and providing facilities to pursue the study and also, to the forest staff of Nahargarh Wildlife Sanctuary, especially Gaurav Kumar, Range Forest Officer and Rajaram Meena (Asst. forester) for their support and cooperation.

8. Forest Survey of India 2021, *State of forest report*. Ministry of Environment and forests Government of India, <https://fsi.nic.in>
9. Champion HG and Seth SK 1968, *A Revised Survey of Forest Types of India*, Govt. of India Press, New Delhi, India.
10. Sharma S and Tiagi B 1979, *Flora of North-East Rajasthan*. Kalyani Publishers, New Delhi.
11. Shetty BV and Singh V 1987, *Flora of Rajasthan*. Botanical Survey of India. Calcutta. Vol. **I**.
12. Shetty BV and Singh V 1991, *Flora of Rajasthan*. Botanical Survey of India. Calcutta. Vol. **II**.
13. Shetty BV and Singh V 1993, *Flora of Rajasthan*. Botanical Survey of India. Calcutta. Vol. **III**.
14. Tiagi B and Aery NC 2007, *Flora of Rajasthan* (South and South east region). Himanshu Publication, New Delhi.
15. Yadav BL and Meena KL 2011, *Flora of South-Central Rajasthan*. Scientific Publishers, Jodhpur.
16. Kotiya A, Solanki Y and Reddy GV 2020, *Flora of Rajasthan*. Rajasthan State Biodiversity Board, Jaipur, Rajasthan. 1-770.
17. Bentham G and Hooker JD 1862-1882, *Genera Plantarum: Ranunculaceae to Corranaceae* (Family Ordens). L. Reeve & Company, Henrietta Street, Covent Garden, London. Vol. **I**. Part III.